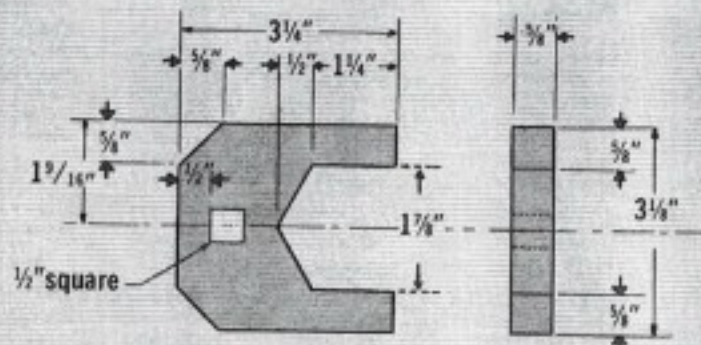


Dear Editor,

Using the standard crowfoot wrench and a torque wrench on the UH-1 main rotor-hub drag brace jam nuts can be a bit of a problem. The crowfoot spreads, the wrench slips, and you wind up with some bruised knuckles.

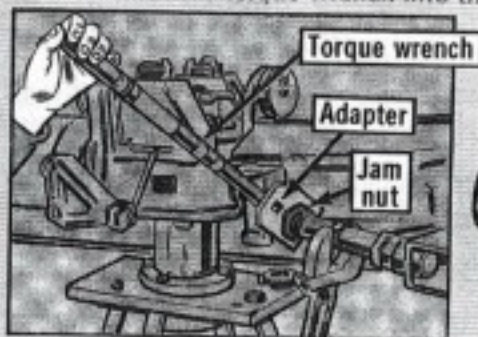
We solved the problem, tho, by making up this steel adaptor.



Tolerance $\pm .010$ inches

Break all sharp edges

Just insert the torque wrench into the adaptor...no more slips!



David Ahlman
Ft. Devens, MA

(Ed Note—
Remember that
you're adding 2 inches
to the length of the torque
wrench. So use the formula
in Fig 6-61, TM 55-1500-204-
25/1, to figure the torque value
needed on the jam nuts.