

Tools...

## Work Aid Takes the Guesswork Out.

JUST A LITTLE MORE ADJUSTMENT, I THINK!?

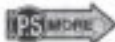
HOLD IT! I HAVE THE TOOL TO SHOW EXACTLY HOW MUCH ADJUSTMENT TO MAKE!

Dear Editor,

Here's a tool for measuring collective lever displacement on the UH-1. It allows the mechanic to accurately set the low pitch setting of the collective sleeve/control tube. It also accurately indicates total collective sleeve travel.

It's a lot quicker and far more accurate than using a 6-in steel rule.

38



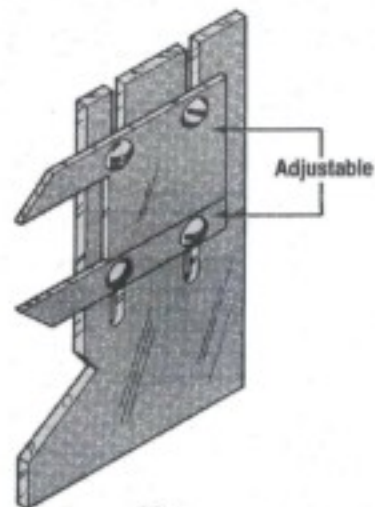
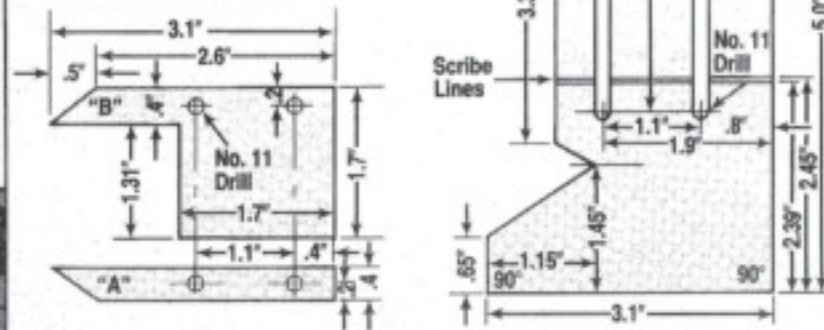
Make the work aid from .090-in aluminum stock. You also need:

Screws (4) MS35215-55  
NSN 5305-00-206-2510

Nuts (4) AN320-3  
NSN 5310-00-285-2177

Washers (8) AN960PD10L  
NSN 5310-00-771-6827

Here's how to make it:



DEC 90

39

