

PAINLESS BOLT PULLING

TAKE
OUT BOLT
WITH
PULLER.



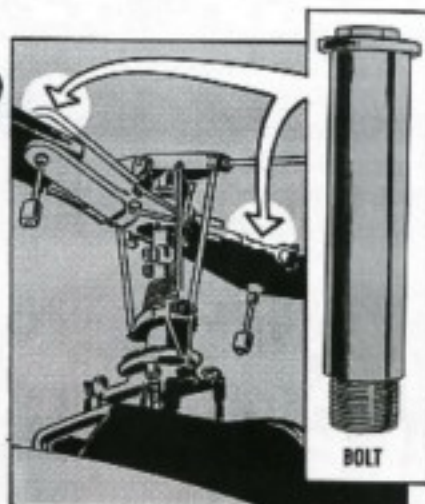
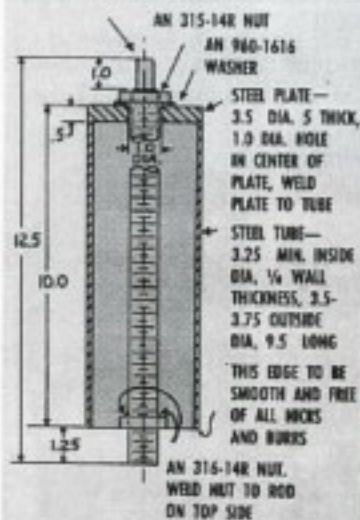
There may come a time when a mechanic has a tougher job pulling a Huey (UH-1) main rotor blade bolt than a dentist has pulling a stubborn wisdom tooth.

Of course, the dentist has some right-fancy tools to work with. The mechanic, on the other hand, has to use a hammer and drift—or better—to get the bolt out. And with those tools he may end up with an injured hand or some damaged bird parts.

If you face this problem, a solution is to get your CO's OK to make up this puller:

These dimensions go for the UH-1B and D Models:

STEEL ROD — 12.5" LONG. $\frac{1}{2}$ " x 14
THREADS, ENTIRE LENGTH, $\frac{1}{2}$ "
SQUARE SHANK ON THIS END



If you have the UH-1A Model, you'll need to make these changes:

The steel rod should have 1.00-14 NF threads instead of $\frac{1}{2}$ -14NF.

The nut welded on the rod should be .50 inch from the end, instead of 1.25 inches.

Then, too, the ID of the puller housing should be 2.50 inches with a $\frac{1}{8}$ -in minimum wall thickness.

Make the hole in the plate, which is welded to the steel tube, $1\frac{1}{8}$ inches, instead of 1.00 inch.

Use nuts, AN 315-16R, AN 316-16R, and washer, AN 960-1716 and you're in business.

To use the puller you take the hub and blade off the bird, following the paop in the organizational maintenance pub.

Next, take the plug out of the top of the bolt and center the puller over the bolt. Screw the puller rod into the bolt until it's against the welded nut on the rod, and make with a wrench (clockwise) to pull the bolt. During the pulling be sure you take the tension off the bolt by keeping the blade tip raised.

Yessir, for painless bolt extractions, this puller is just what the doctor ordered.