

Is Your Tang Weak?

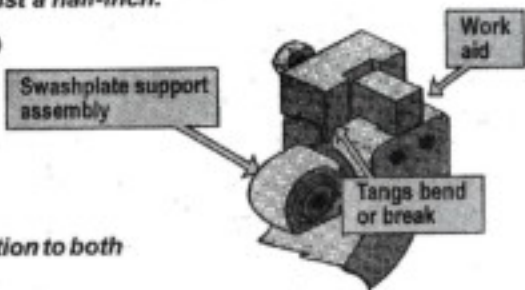


Dear Windy,
 Para 5-62.b. of TM 55-1520-210-23-1 makes it clear: "Do not use any device other than the work aid described to spread the housing ears during trunnion removal/installation."

But the work aid described in Fig 5-38 has two tang problems. First, the tang where it fits in the trunnion is too thin. It bends, and in some cases, breaks. When that happens, you damage the swashplate trunnion.

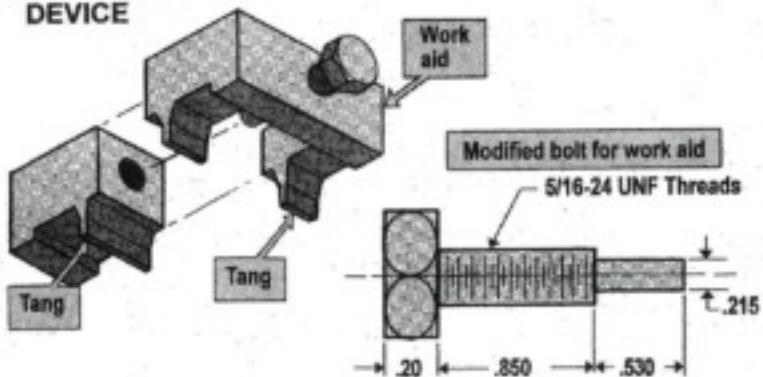
Second, the tangs are not equal in surface area. There's an inch pulling against a half-inch.

OLD WORK AID DEVICE



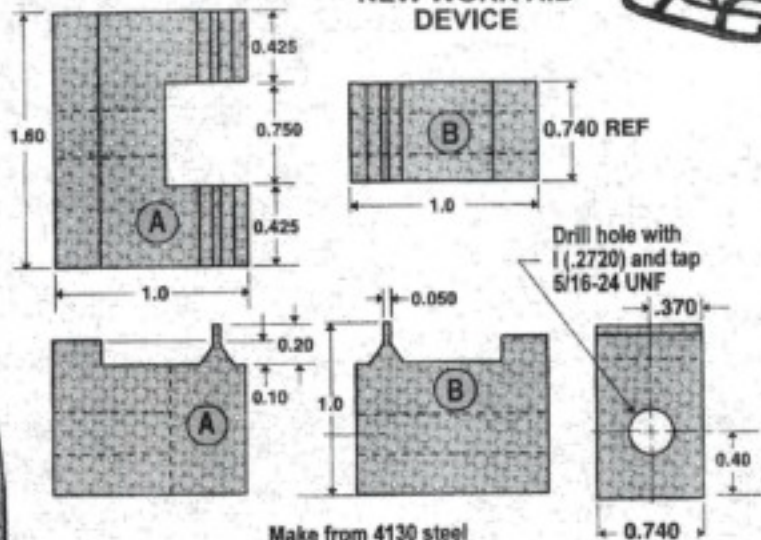
Here's my solution to both problems:

NEW WORK AID DEVICE



If possible use bolt 5306-00-059-9283
 P/N 114D3053-7

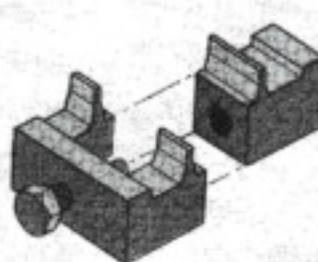
NEW WORK AID DEVICE



Make from 4130 steel

Ron Dawson
 Ft Meade, MD

THANK'S FOR THE INFO RON!



Windy note:

Para 5-62.h. gives you permission to fabricate the work aid as shown in Fig 5-38. If you're fabricating one (and have had the problems Ron describes, give his solution a try.)