

(3) Remove three gear case mounting screws (10, figure 12-4).

(4) Separate converter (24, figure 12-2) from electric motor (23).

(5) Unscrew motor gear case (11, figure 12-4) from converter assembly (24, figure 12-2).

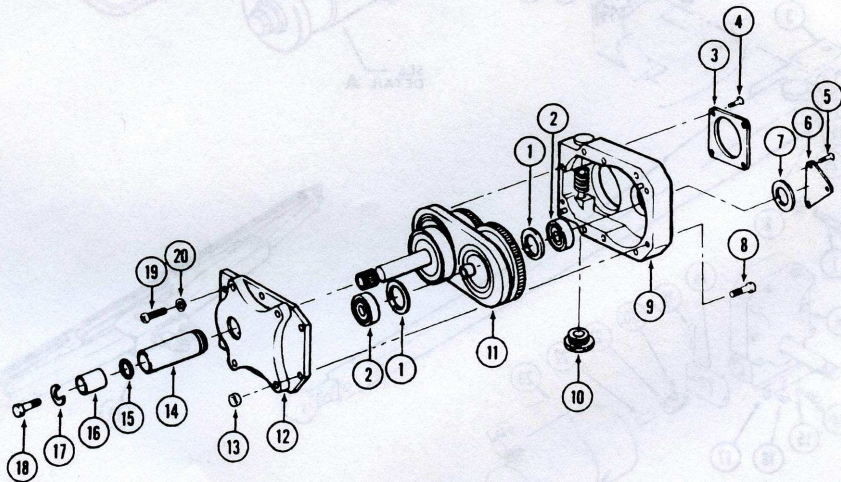
(6) Remove and separate nipple (21) and Coupling (22).

b. Converter Assembly.

(1) Remove retaining ring (17) from linkage shaft.

CAUTION

Insert screwdriver in slots to separate cover plate from housing.



- | | |
|-----------------------------------|--------------------------------|
| 1. Washer | 11. Converter linkage assembly |
| 2. Annular ball bearing | 12. Cover plate |
| 3. Nameplate | 13. Nut |
| 4. Screw | 14. Sleeve |
| 5. Screw | 15. Preformed packing |
| 6. Idler cover plate | 16. Sleeve |
| 7. Washer | 17. Retaining ring |
| 8. Screw | 18. Bolt |
| 9. Worm gear and housing assembly | 19. Screw |
| 10. Worm end cap | 20. Washer |

Figure 12-3. Converter Assembly